

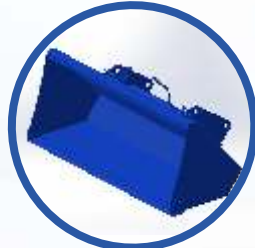
**Solis**

# FRONTEND LOADER



**AUTOMATIC SELF LEVEL  
AT TIME OF LOADING**

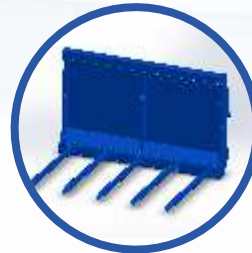
## LOADER ATTACHMENTS



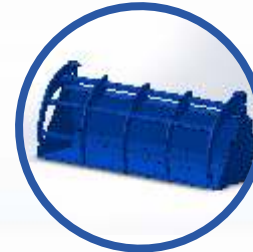
SKID STEER  
BUCKET



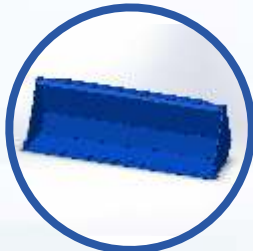
PALLET FORK



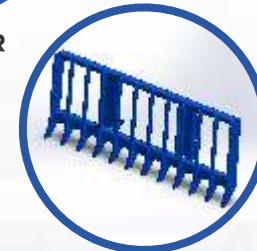
MANURE FORK



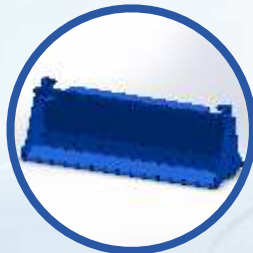
GRABBER  
BUCKET



STANDARD  
BUCKET



STICK RAKE



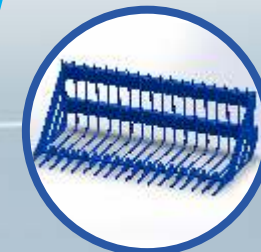
4 IN 1 BUCKET



SMART HITCH



BALE GRAB






STONE BUCKET



# FRONT END LOADER

## TECHNICAL SPECIFICATIONS

Loader Model Name	2400	3200	5500	7300	8300	8700
Tractor (HP)	20	26	50	60	75-90	105-110
A.  Maximum Lift Height at Bucket Pivot Pin (mm)	1900	2170	2800	3110	3460	3720
B.  Maximum Lift Height at Bottom of Bucket (mm)	1752	1950	2530	2770	3120	3380
C.  Dump Clearance (mm)	1435	1635	2085	2200	2560	2810
D.  Overall Height in Carry Position (mm)	1120	1170	1600	1820	1890	1990
E.  Lifting Arm Pivot (mm)	950	1000	1450	1600	1700	1850
F.  Dump Angle (°degree)	46	45	44	59	54	55
G.  Crowd Angle Loader at Ground Level (°degree)	44	43	32	45	46	45
H.  Crowd Angle Loader at Full Height (°degree)	48	47	40	48	48	48
I.  Digging Depth (mm)	60	106	140	340	280	230
J.  Reach Under Dump Bucket (mm)**	380	790	800	1000	725	980
 Arm Centers (mm)	800	800	1000	1100	1100	1100
 Bucket Volume (m <sup>3</sup> )	0.13	0.13	0.34	0.47	0.47	0.55
 Bucket Weight (Kg)	45	45	160	190	190	210
 Rated Capacity (Kg)	280	300	800	1000	1000	1200
K.  Lift Capacity to Max Height at Pivot Pins (Kg)	540	430	900	1220	1300	1460
L.  Lift Capacity 500 mm Further to Bucket Pivot (Kg)	500	400	-	-	-	-
M.  Lift Capacity 800 mm Further to Bucket Pivot (Kg)	-	-	850	1240	1310	1500
N.  Breakout Force at Pivot Pins (KgF)	540	485	1540	1800	1940	2130
O.  Roll Back Force at Ground Level (KgF)	930	920	1280	2920	2930	3520
 Roll Back Force Loader at Max. Reach (KgF)	780	855	1400	2670	2710	3200

A loader is a type of tractor, usually wheeled, sometimes on tracks, that has a front-mounted wide bucket connected to the end of two booms (arms) to scoop up loose material from the ground, such as dirt, sand or gravel, and move it from one place to another without pushing the material across the ground.



### INTERNATIONAL TRACTORS LIMITED

International Business Office: Teri School of Advanced Studies, Plot No.10, Institutional Area, Vasant Kunj, New Delhi-110070 (India)  
 Phone: +91 11 66 45 5200 | Work: Jalandhar Road, Hoshiarpur - 146022, Punjab (India) | Phone: +91 1882 302220, 302221  
 Fax: +91 1882 302293 | Email: exports@sonalika.com | URL: www.solistractors.com

Auth. Dealer